

# Size & fitting



## Size help and products measurements



### Solar H2Out Jacket

The Spidi Solar H2OUT Jacket is an ideal choice for performance motorcyclists who want the best possible protection in a comfortable jacket with a form-fitted appearance. As an added bonus, the Solar H2OUT has a waterproof lining and removal thermal liner offering 100g insulation, making it a genuine 3-season motorcycle jacket. The main chassis of the Solar is a high-tenacity polyester material that offers excellent abrasion resistance, with carefully placed vents for staying cool, and 3M® reflective zones to make you far more visible when riding at night. Water-repellent barriers have been fitted to the wrists and waist to help keep you dry during unexpected downpours, and there's an adjustable waist to ensure a perfect fit. It has included waterproof external and internal pockets to keep your items dry, and there's a pants-to-jacket connection clip for additional safety. The Solar H2OUT has CE certification to the Pr En 17092-3:2017 Class AA standard, and it includes Warrior Protectors (certified EN 1621-1 Level 1) in the shoulders and elbows. There is also a pocket for an optional back protector which is sold separately.

### BODY MEASUREMENT CHART

Measurements are to be taken without any clothes.

[switch to cm](#)

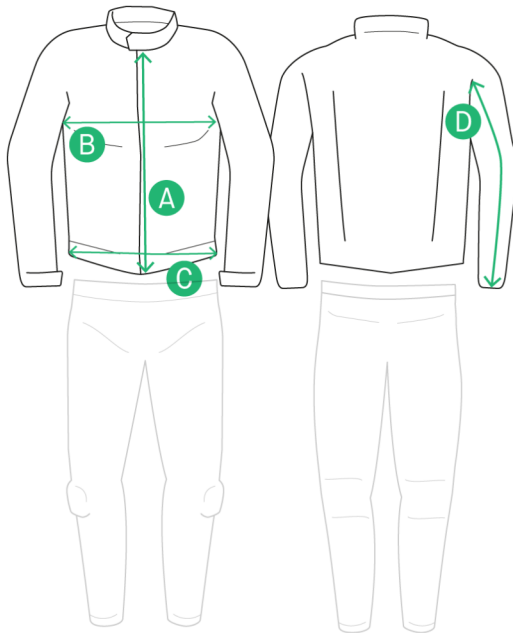
		Man	
	Size	Height	Chest
XS	44	63 <sup>3</sup> / <sub>8</sub> /	32 <sup>1</sup> / <sub>4</sub> /
		68 <sup>1</sup> / <sub>8</sub> in	34 <sup>5</sup> / <sub>8</sub> in
S	46	64 <sup>5</sup> / <sub>8</sub> /	34 <sup>5</sup> / <sub>8</sub> /
		69 <sup>1</sup> / <sub>4</sub> in	37 in
M	48	65 <sup>3</sup> / <sub>4</sub> /	37 /
		70 <sup>1</sup> / <sub>2</sub> in	39 <sup>3</sup> / <sub>8</sub> in
L	50-52	66 <sup>7</sup> / <sub>8</sub> /	39 <sup>3</sup> / <sub>8</sub> /
		71 <sup>5</sup> / <sub>8</sub> in	41 <sup>3</sup> / <sub>4</sub> in
XL	54	68 <sup>1</sup> / <sub>8</sub> /	41 <sup>3</sup> / <sub>4</sub> /
		72 <sup>7</sup> / <sub>8</sub> in	44 <sup>1</sup> / <sub>8</sub> in
XXL	56-58	69 <sup>1</sup> / <sub>4</sub> /	44 <sup>1</sup> / <sub>8</sub> /
		74 in	46 <sup>1</sup> / <sub>2</sub> in
3XL	60-62	70 <sup>1</sup> / <sub>2</sub> /	46 <sup>1</sup> / <sub>2</sub> /
		75 <sup>1</sup> / <sub>4</sub> in	48 <sup>7</sup> / <sub>8</sub> in
4XL	60-62	70 <sup>1</sup> / <sub>2</sub> /	48 <sup>7</sup> / <sub>8</sub> /
		75 <sup>1</sup> / <sub>4</sub> in	51 <sup>1</sup> / <sub>8</sub> in
5XL	60-62	70 <sup>1</sup> / <sub>2</sub> /	51 <sup>1</sup> / <sub>8</sub> /
		75 <sup>1</sup> / <sub>4</sub> in	53 <sup>1</sup> / <sub>2</sub> in
6XL	60-62	70 <sup>1</sup> / <sub>2</sub> /	53 <sup>1</sup> / <sub>2</sub> /
		75 <sup>1</sup> / <sub>4</sub> in	55 <sup>7</sup> / <sub>8</sub> in
		Woman	
	Size	Height	Chest
XXS	36	61 <sup>3</sup> / <sub>8</sub> /	29 <sup>7</sup> / <sub>8</sub> /
		66 <sup>7</sup> / <sub>8</sub> in	33 <sup>7</sup> / <sub>8</sub> in

XS	38	62 <sup>5</sup> / <sub>8</sub> / 66 <sup>7</sup> / <sub>8</sub> in	31 <sup>1</sup> / <sub>2</sub> / 33 <sup>7</sup> / <sub>8</sub> in
S	40	62 <sup>5</sup> / <sub>8</sub> / 68 <sup>1</sup> / <sub>2</sub> in	33 <sup>1</sup> / <sub>8</sub> / 35 <sup>3</sup> / <sub>8</sub> in
M	42-44	63 <sup>3</sup> / <sub>4</sub> / 70 <sup>1</sup> / <sub>8</sub> in	34 <sup>5</sup> / <sub>8</sub> / 37 in
L	46	64 <sup>5</sup> / <sub>8</sub> / 70 <sup>1</sup> / <sub>2</sub> in	37 / 39 <sup>3</sup> / <sub>8</sub> in
XL	48-50	65 <sup>3</sup> / <sub>8</sub> / 70 <sup>7</sup> / <sub>8</sub> in	39 <sup>3</sup> / <sub>8</sub> / 41 <sup>3</sup> / <sub>4</sub> in
XXL	52	66 <sup>1</sup> / <sub>8</sub> / 71 <sup>1</sup> / <sub>4</sub> in	41 <sup>3</sup> / <sub>4</sub> / 44 <sup>1</sup> / <sub>8</sub> in
3XL	54	66 <sup>1</sup> / <sub>8</sub> / 71 <sup>1</sup> / <sub>4</sub> in	44 <sup>1</sup> / <sub>8</sub> / 47 <sup>1</sup> / <sub>4</sub> in

---

#### MEASURING GUIDE

A step by step guide on how our measurement are taken.




---

#### PRODUCT MEASUREMENT

ALL ITEMS ARE INDIVIDUALLY MEASURED BY THE SPIDI SIZE AND FIT TEAM.

1. Compare these product measurements to a similar garment you already own.
2. Take all measurement from the outside, with the garment lying flat.

	<b>A</b>	<b>B</b>	<b>C</b>	<b>D</b>
<b>S</b>	48.5 cm / 19.1 in	51.0 cm / 20.1 in	47.0 cm / 18.5 in	60.0 cm / 23.6 in
<b>M</b>	51.0 cm / 20.1 in	54.0 cm / 21.3 in	50.0 cm / 19.7 in	62.0 cm / 24.4 in
<b>L</b>	53.0 cm / 20.9 in	57.0 cm / 22.4 in	53.0 cm / 20.9 in	63.5 cm / 25.0 in
<b>XL</b>	56.0 cm / 22.0 in	60.0 cm / 23.6 in	56.0 cm / 22.0 in	65.0 cm / 25.6 in
<b>2XL</b>	58.0 cm / 22.8 in	63.0 cm / 24.8 in	59.0 cm / 23.2 in	67.0 cm / 26.4 in
<b>3XL</b>	58.5 cm / 23.0 in	66.0 cm / 26.0 in	62.0 cm / 24.4 in	66.0 cm / 26.0 in
<b>4XL</b>	59.0 cm / 23.2 in	69.0 cm / 27.2 in	65.0 cm / 25.6 in	64.5 cm / 25.4 in

HAVE YOU STILL DOUBTS ABOUT SIZE AND FITTING?

Our Style Specialists can assist you, providing detailed information on any of our products: [infoservice@spidi.com](mailto:infoservice@spidi.com)

CONTACT US

TRY IT