

1 – Overview

1.1 Main Functions

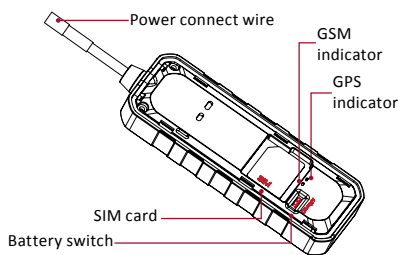
- GPS + LBS positioning
- Vibration / Displacement alarm
- Power failure / Overspeed alarm
- Compact and lightweight
- IPX5 waterproof
- Geo-fence
- Mileage
- alarm notification via APP, SMS or Phonecall

1.2 Specifications

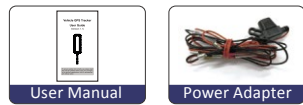
Frequency	GSM 850/900/1800/1900MHz
GPRS	Class 12, TCP/IP
Location accuracy	<10 meters
TTFF (open sky)	Avg. hot start ≤1sec Avg. cold start ≤32sec
Battery	Li-ion 100mAh/3.7V
Working voltage/current	9-36VDC/32mA(12VDC),18mA(24VDC)
Standby current	≤5mA
Operating temperature	-20°C— +70°C
Dimension	73.8(L) x 25.9(W) x 12.2(H) mm
Weight	26.6g

2. Overview

2.1 Device



2.2 Device



2.3 LED Indicator

Blue LED

Status	Meaning
Flash quickly	Searching signal
Solid blue	Positioning succeed
Off	Sleep/Dormant

Green LED

Status	Meaning
Quick flashing	Search network
Slow flashing	Normal network signal
Solid green	Calling/Online
Off	Abnormal network/No SIM card

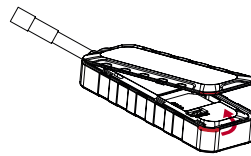
LED indicator will be OFF when device electrified for 5 minutes. LED can be controlled by APP.

3. SIM card

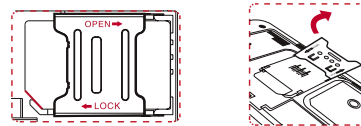
SIM card should be VOICE and GPRS enabled. Before SIM card installation, ensure external power is disconnected and battery switch is on OFF.



1. Find the notch and remove bottom cover

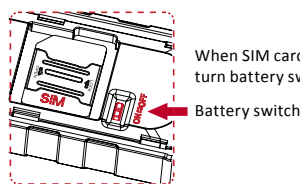


2. Insert the SIM card as shown below



Power on

Open top cover and turn battery switch to ON. Terminal starts up by using backup battery. Connect the device to external power, then power indicator lights up and battery is charging.

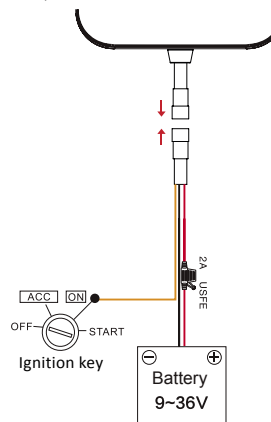


Power off

Disconnect external power and turn battery switch to OFF. Power LED is off and charging stop after device power off.

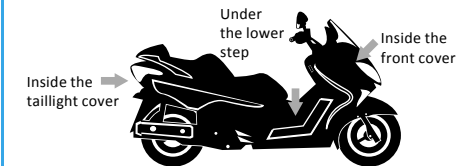
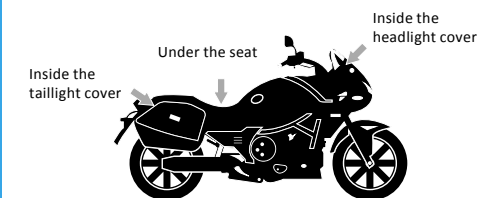
4. Wiring Instruction

Ignition key connection is mandatory, this signal activate and deactivate the arming of device. When ignition key is on, device is not armed and some alarms are disabled. When ignition key is off, after a timeout, all alarms are active.



5. Installation

Please install the device under the guidance of professional personnel.



6.1 Download APP

Please download and install the APP GPSANGEL, APP store or Google Play store. Create your account and associate your device with the APP.

7. Main Functions

7.1 SOS

Set the SOS number (it's the vehicle owner phone number) to use SMS command and receive SMS alerts. SMS command can be sent only from SOS registered number.

3 SOS phone numbers can be set. Alerts will be sent to pre-set SOS number.

(1) Add SOS number. Send SMS command to the terminal. Command format: **SOS,A,phone number 1,phone number 2,phone number 3#**

"A" means to add new numbers, for example: **SOS,A,18165542975,18165542976,18165542977#**

It will reply "OK! SOS1: 18165542975 SOS2: 18165542976 SOS3: 18165542977" after set successfully.

(2) Delete SOS number.

Command: **SOS,D,phone number 1,phone number 2,phone number 3#**

(3) Check current SOS number.

Command: **SOS#**
Respond example: **SOS1: 12352***, SOS2: 132532***, SOS3: 135323*****

7.2 Multiple Alarms

Power cut-off alarm

Alarms have different alert method. It can be via APP + SMS + Phone call. This setting can be changed via APP. When the electricity supply of device is cut off, alarm message will be sent to SOS number.

Low battery alarm

When backup battery is low, alarm message will be sent to SOS number.

Displacement alarm (Default OFF)

Device will send movement alarm when vehicle moves out the pre-set distance.

Overspeed alarm (Default OFF)

Speed limitation can be set by SMS. When vehicle's speed exceeds the pre-set value, overspeed alarm will be sent.

Vibration alarm (Default ON)

When vehicle vibrates several times, the vibration alarm will be triggered.

7.3 Remote Restart

Restart the terminal sending SMS command. SMS command: **RESET#**

8. Frequently Used SMS Command List

1	Check device status	STATUS#
2	Get device GPS latitude/longitude	WHERE#

3	Check device location in Google Map link	1, URL# 2, POSITION
4	SOS number setting	1. Add SOS number: SOS,A,number 1,number 2,number 3# Example:SOS,A,12342***,134533***,135432***# 2. Delete the SOS number: SOS,D,phone number# 3. Query SOS number: SOS#
5	Vibration alarm (Default ON)	1, SENALM,ON# 2, SENALM,OFF#
6	Displacement alarm (Default OFF)	1. MOVING,ON,R, M# R=100~1000; Movement radius, unit: meter M=0~3; 0: only GPRS; 1: SMS+GPRS; 2: GPRS+SMS+CALL; 3: GPRS +CALL; Default: 1 2. MOVING,OFF#
7	Power cut-off alarm	1. POWERALM, [A],[M],[T1],[T2],[T3]# A=ON/OFF, default:ON; M=0/1/2/3, way of alarming, 0: GPRS only, 1: SMS+GPRS, 2: GPRS+SMS+phone call, 3: GPRS+ call, default: 1; T1=2~60 (second), power off detect time, default: 10; T2=1~3600 (second), default: 300; T3=0~3600 (second), ACC ON to OFF status step alarm prohibition time default: 0; 2. POWERALM, OFF# Turn off the power alarm. 3. POWERALM# Check the parameters of the alarm.

8	Low battery alarm	1. BATALM, [A], [M]# A=ON/OFF, default:ON; M=0/1, way of alarming, 0: GPRS only, 1: SMS+GPRS 2. BATALM,OFF# 3. BATALM# Check the parameters of the alarm.
9	Overspeed alarm	1. SPEED,[A],[B],[C],[M]# A=ON/OFF, turn on/off overspeed alarm. Default: OFF B=5~600 (second),time interval, default:20 (second) C=1~255(km/h), speed limit, default:100(km/h); M=0/1, alarm method, 0 : GPRS only, 1: SMS+GPRS, default: 1 2. SPEED# Check the parameters of over speed.
10	Restart	RESET# Device restart 20 seconds after receiving this command
11	APN setting	1. APN, [apnname]# E.g: APN,internet# 2. APN, [apnname],[user],[pwd]# E.g: APN,internet,CLIENTE,AMENA#
12	Delayed defense setting	DEFENSE,A# A:1~60 minutes, set delayed defense, default value: 5 minutes

Troubleshooting

If you are having trouble with your device, try these troubleshooting procedures before contacting a service professional.

Problems	Causes	Solutions
Poor signal	The signal waves are unable to transmit when use the GPS tracker in the places that have poor signal reception, such as: tall building around or basement.	Using the GPS tracker in the places that have good signal condition.
	Device covered by metal objects or face down	Device face up or installed in somewhere else
Unable to boot	Low battery	Connect to external power supply to charge
	Fusing	Contact supplier to replace fuse
Unable to connect to the network	Device covered by metal objects or face down	Device face up or installed in somewhere else
	SIM card inserted incorrectly	Insert SIM card again
	Dirty things exist above the SIM card	Clean SIM card
	Damaged or invalid SIM card	Replace SIM card
	Not in GSM service area	Move to service area
Charge failure	SIM has no access to GPRS	Contact network supplier to get GPRS service
	SIM card charges owed	Charge
Parameters modification failure	Command format error	Edit and send the command again
	No reply after sending command	Check network and ensure SMS available



EN - Cellularline S.p.A., declares that this device complies with Directive 2014/53/EU. The full text of the EU declaration of conformity is available at the following address: www.cellularline.com/declaration-of-conformity



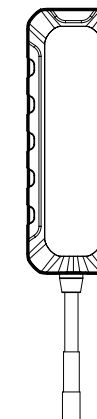
EN - INSTRUCTIONS FOR THE DISPOSAL OF APPLIANCES FOR DOMESTIC USERS (Applicable in countries in the European Union and those with separate waste collection systems) This mark on the product or documentation indicates that this product must not be disposed of with other household waste at the end of its life. To avoid any damage to health or the environment due to improper disposal of waste, the user must separate this product from other types of waste and recycle it in a responsible manner to promote the sustainable re-use of the material resources. Domestic users should contact the dealer where they purchased the product or the local government office for all the information regarding separate waste collection and recycling for this type of product. Corporate users should contact the supplier and verify the terms and conditions in the purchase contract. This product has a battery than cannot be replaced by the user. Do not attempt to open the device to remove the battery as this could cause malfunctions and seriously damage the product. When disposing of the product, please contact the local waste disposal authority to remove the battery. The battery inside the device was designed to be able to be used during the entire life cycle of the product

Cellularline S.p.A.

Via Lambrakis 1/A, 42122 Reggio Emilia, Italy
www.cellularline.com

INTERPHONE
STAY IN TOUCH

Vehicle GPS Tracker
GPSANGEL 10
User Guide



To ensure quickly and correctly use, please read this manual carefully before using. Any changes to the product appearance, color or accessories are without notice.

One side of the device is marked with Interphone logo, this side must be up. Place the unit upside down will result in connection issues. Avoid placing the device somewhere that metal will be covering it up.

MAGGIORI INFORMAZIONI SUL SITO:
www.interphone.com

ISTRGANGEL10EN

R0219